

F

A



Paul Betenly

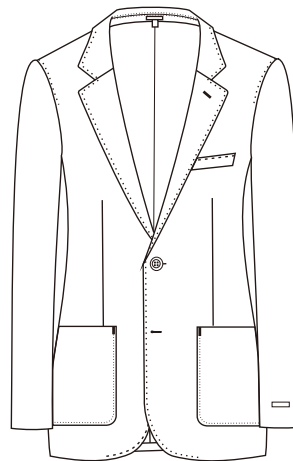
FALL 2020 COLLECTION LINESHEETS

L

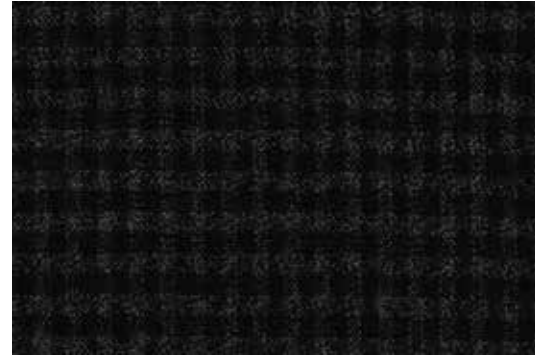
L

WWW.PBETENLY.COM

LANDON-Modern Soft Coats



- 2 Button
- Notch lapel
- Side vents
- Upper welt lower patch pocket
- Fully lined
- Soft shoulder pad



2202049 56%WOOL29%VI14%PA1EA

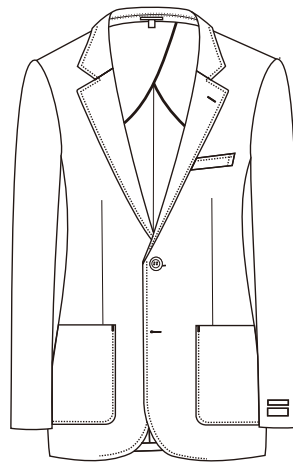


2202055 95%WOOL3%SE2%WS



2202068 94%WOOL6%PA

LAYTON-Modern Soft Coats



- 2 Button
- Notch lapel
- Side vents
- Upper welt lower patch pocket
- Self butterfly lined interior
- No shoulder pad
- Canvas in chest and over shoulder
- Soft construction



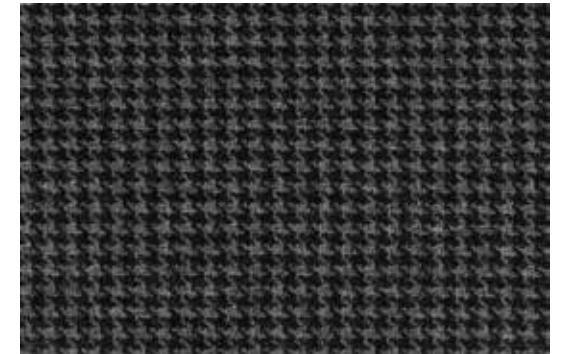
2202013 86%WOOL13%SPANDEX1%LYCRA



2202071 100%WOOL



2202057 54%WOOL31%CO13%MD2%EA



2202047 72%WOOL25%CO3%SE



2202007 100%WOOL



2202008 100%WOOL

LAYTON-Modern Soft Coats

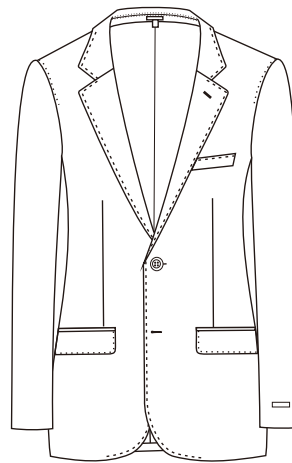


2202058 54%WOOL31%CO13%MD2%EA



2202048 72%WOOL25%CO3%SE

TAYLOR-Modern Soft Coats



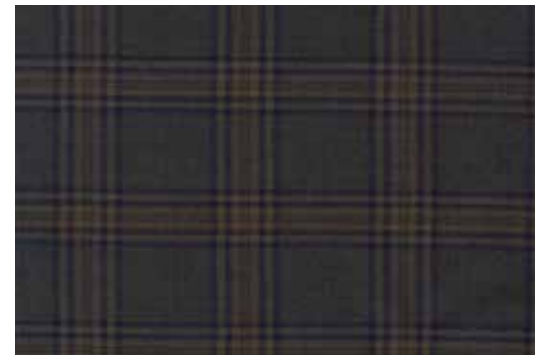
- 2 Button
- Notch lapel
- Side vents
- Flap pocket
- Fully lined



2202064 100% WOOL



2202065 100%WOOL



2202019 100% WOOL

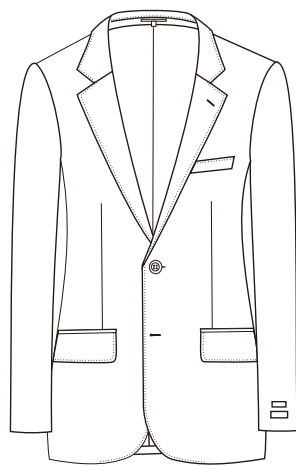


2202006 92% WOOL 6%SE2%EL



2202009 98%WOOL 2%EL

SANDRO - Classic Sport Coats



SANDRO (Classic Fit):

- 2 Button
- Notch lapel
- Side vents
- Flap pockets
- Fully lined



2202054 100%WOOL



2202045 100%WOOL



2202020 100%WOOL



2202053 100%WOOL



2202066 100%WOOL



2202003 100%WOOL

SANDRO - Classic Sport Coats



2202005 100%WOOL



2202022 56%WOOL30%P9%LI5%TS

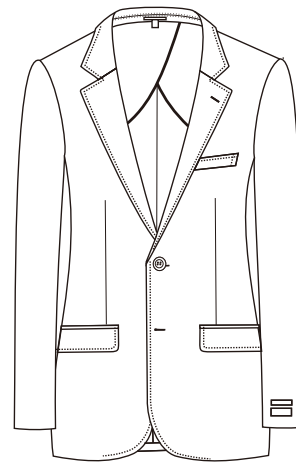


2202021 56%WOOL30%P9%LI5%TS



2202004 100%WOOL

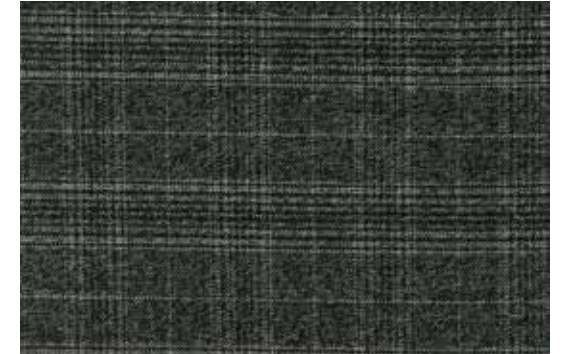
LUKE-Modern Soft Coats



- 2 Button
- Notch Lapel
- Side Vents
- Flap Pockets
- Fully Lined



2202059 93%WOOL5%SE2%EA



2202017 98%WOOL2%LYCRA



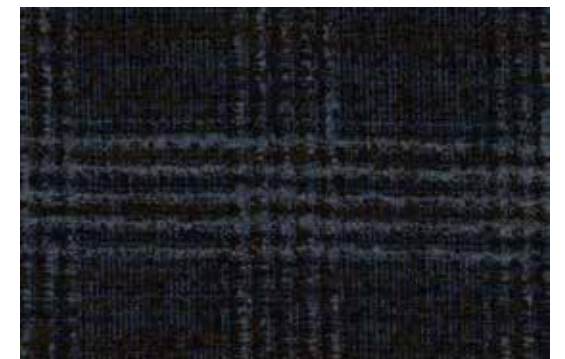
2202044 50%WOOL48%CO2%EA



2202040 98%CO2%EA



2202042 99%CO1%EA



2202062 88%WOOL12%PA

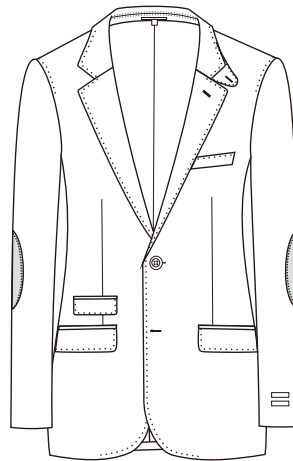
LOGAN-Modern Soft Coats



2202046 77%WOOL23%CO



2202056 100%WOOL



- 2 Button
- Notch Lapel
- Side Vents
- Flap Pockets+Ticket Pocket
- Elbow
- Fully Lined

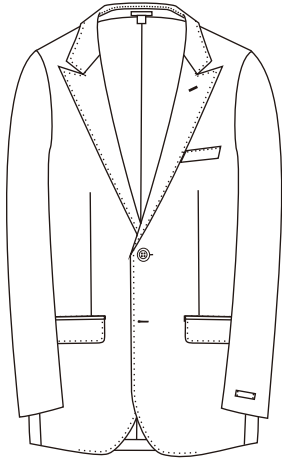
LAVO-Modern Soft Coats



2202069 90%WOOL10%WS



2202050 98%CO2%EC

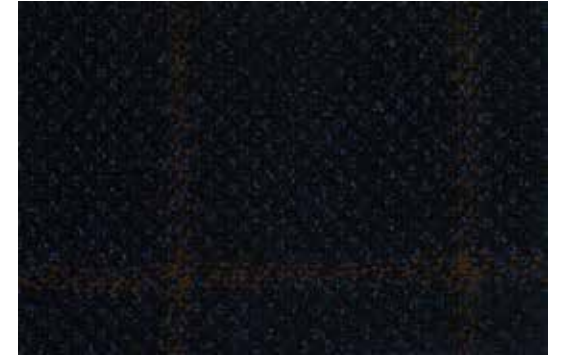


- 2 Button
- Peak Lapel
- Side Vents
- Flap Pockets
- Fully Lined

HENRY-Modern Soft Coats



2202051 98%CO2%EC



2202023 100%WOOL



- 2 Button
- Notch Lapel
- Side Vents
- Flap Pockets
- Fully Lined

NAPLES-Modern Soft Coats



- 2 Button
- Notch Lapel
- Side Vents
- Upper welt lower patch pocket
- Half lined
- No shoulder pad



2202025 96%WV 3%PES 1%EL



2202026 96%WV3% PES 1%EL

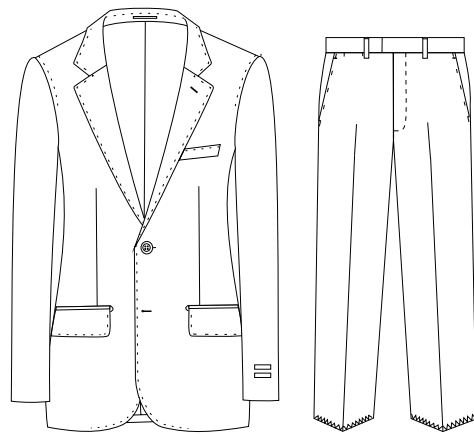


2202027 100%WV



2202028 90%WV 10%WS

RONALDO - Modern Suits

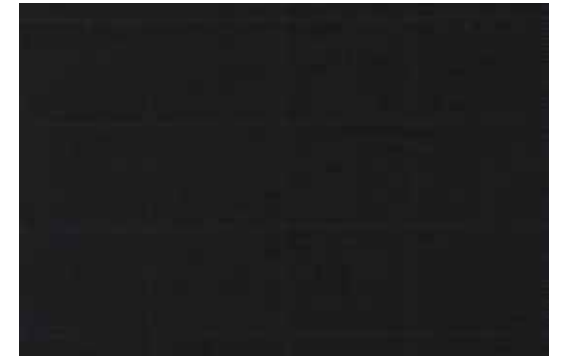


RONALDO (Modern Fit):

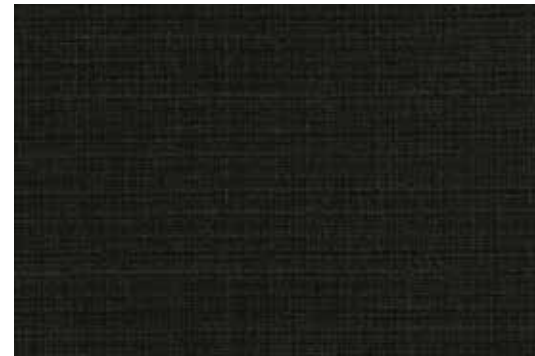
- 2 Button
- Notch lapel
- Half canvas construction
- Side vents
- Flap pockets
- Fully lined
- Roma pants



1202001 100%WOOL



1202003 100%WOOL



1202015 100%WOOL



1202002 100%WOOL

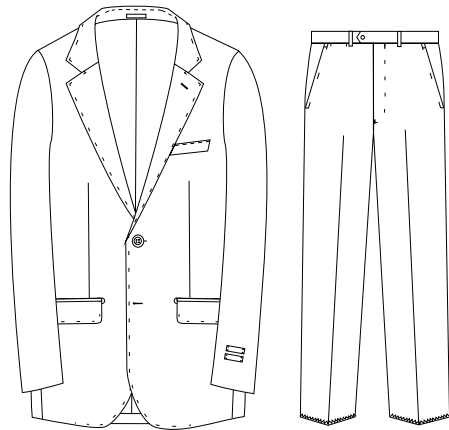


1202016 98%WOOL 2%EL



1202009 98%WOOL2%LY

THOMAS - Classic Suits



THOMAS (Classic Fit):

- 2 Button
- Notch lapel
- Half canvas construction
- Side vents
- Flap pockets
- Fully lined
- Florence pants



1202010 98%WOOL 2% EL



1202018 100%WOOL

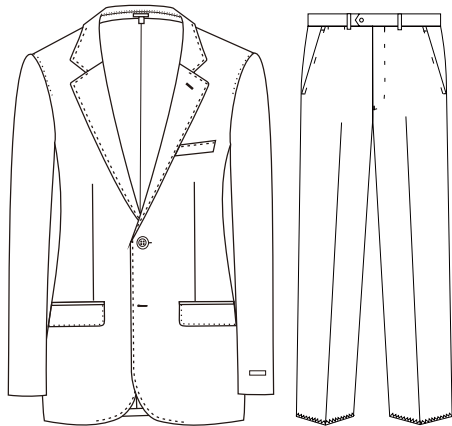


1202019 100%WOOL



1202005 100%WOOL

TRAVIS - Classic Suits



- 2 Button
- Notch Lapel
- Half canvas construction
- Side Vents
- Flap Pockets
- Fully Lined
- Florence Pants



1202008 92%WOOL6%MS2%LY



1202011 98%WOOL 2%EL



1202004 100%WOOL

TRADE SHOWS:

- **MRKET, NEW YORK**

@JACOB JAVITS CENTER
BOOTH#703
JAN 19-21

- **DALLAS MEN'S SHOW**

@WORLD TRADE CENTER
SHOWROOM#7606
JAN 25-27

- **WEST COAST TREND SHOW LOS ANGELES**

@EMBASSY SUITES LAX NORTH
ROOM#517
JAN 26-27

- **SOUTHERN CLOTHING MARKET**

@CHARLOTTE, N.C. EMBASSY SUITES
FEB 1-4

- **CHICAGO COLLECTIVE**

@CHICAGO MERCHANDISE MART
BOOTH#7-5080
FEB 16-18

- **HABERDASHER'S GUILD SHOW**

@THE DOUBLE TREE SUITES HOTLE
FEB 23-24

SALES REP:

SALES DIRECTOR

DAVID ABRIL
C: 949.636.9995
DAVID@PBARISTO.COM

NORTHEAST

STEVE MEYER
C:914.671.8687
SMEYER181@OPTONLINE.NET

SOUTHEAST

J.C.FAIRVALLEY
C:404-915-8532
JCFAIRVALLEY@BELLSOUTH.NET

SOUTHWEST

CHUCK BUSH
C:214.632.5420
CBUSHALES@GMAIL.COM

CUSTOMER SERVICE MANAGER

EMILY ALVAREZ
LA Main Office: 909.218.8500

CONTACTS:

LOS ANGELES OFFICE

4070 EAST GREYSTONE DR. UNIT B
ONTARIO, CALIFORNIA 91761
T. 909.218.8500
F. 909.218.8501
TOLL FREE: 1.877.962.8786

NEW YORK OFFICE

425 5TH AVE. 4TH FLOOR
NEW YORK, NEW YORK 10016
T. 212.768.0166
F. 212.768.0228

WEBSITE

WWW.PBETENLY.COM

SOCIAL MEDIA

 FACEBOOK.COM/PAULBETENLY

 @PAULBETENLY

 @PAULBETENLY